

CORPORATE BOND MARKET

Credit Default Swaps U.S.A

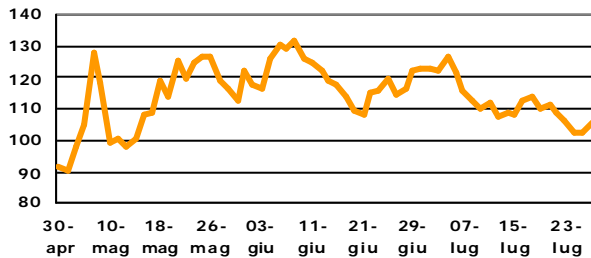
| | Credit Default Swap | 5 Years Spread | Chg Net 5d | Chg Net Ytd | High 52week | Low 52week |
|----------------|---------------------|----------------|------------|-------------|-------------|------------|
| IBOXUMAE Index | Investment Grade | 105 | -4 | 20 | 132 | 76 |
| IBOXUHVE Index | High Vol | 146 | -14 | -1 | 290 | 126 |
| IBOXHYSE Index | High Yield | 560 | -22 | 43 | 878 | 468 |

Credit Default Swaps EURO

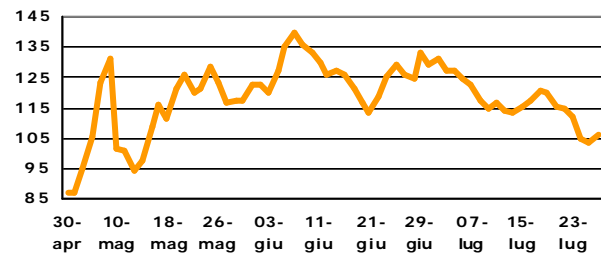
| | Credit Default Swap | 5 Years Spread | Chg Net 5d | Chg Net Ytd | High 52week | Low 52week |
|---------------------|---------------------|----------------|------------|-------------|-------------|------------|
| ITRXEBE CBGN Curncy | Investment Grade | 106 | -9 | 30 | 139 | 65 |
| ITRXEHE CBGN Curncy | High Vol | 153 | -18 | 43 | 206 | 93 |
| ITXEX512 Index | Crossover | 443 | -39 | 10 | 610 | 359 |

| EUROZONE SOVR | 5 Years Spread | Chg Net 5d | Chg Net Ytd | High 52week | Low 52week | Moody's | S&P |
|---------------|----------------|------------|-------------|-------------|------------|---------|-----|
| GRECIA | 733 | -75 | 446 | 1037 | 97 | Ba1 | BB+ |
| PORTOGALLO | 216 | -59 | 125 | 457 | 42 | A1 | A- |
| IRLANDA | 202 | -44 | 46 | 298 | 107 | Aa2 | AA |
| SPAGNA | 179 | -24 | 69 | 278 | 52 | Aaa | AA |
| ITALIA | 135 | -35 | 26 | 249 | 55 | Aa2 | A+ |
| BELGIO | 97 | -11 | 43 | 152 | 29 | Aa1 | AA+ |
| AUSTRIA | 75 | -13 | -10 | 116 | 45 | Aaa | AAA |
| FRANCIA | 64 | -14 | 34 | 100 | 18 | Aaa | AAA |
| OLANDA | 40 | -6 | 9 | 56 | 22 | Aaa | AAA |
| GERMANIA | 37 | -4 | 10 | 59 | 17 | Aaa | AAA |
| FINLANDIA | 26 | -4 | -3 | 41 | 15 | Aaa | AAA |

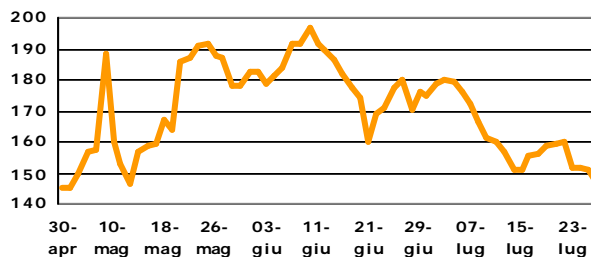
CDX USA 5-Y Investment grade



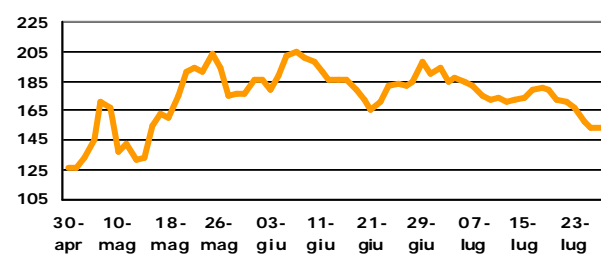
CDX EURO 5-Y Investment grade



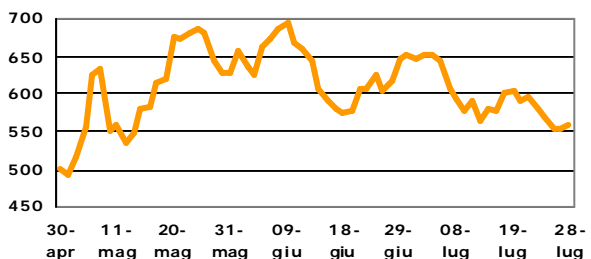
CDX USA 5-Y High-Vol



CDX EURO 5-Y High-Vol



CDX USA 5-Y High-Yield



CDX EURO 5-Y Cross Over

